



student handbook 2025

A GUIDE TO INDIE SCHOOL FOR PARENTS /
GUARDIANS AND STUDENTS

MIDLAND CAMPUS





Published January 2025

Indie School Midland
60 Yelverton Drive,
Midland WA 6056

www.indieschool.edu.au

a message from the principal

Welcome and thank you for enquiring about our schools.

The independent schools were first established in Wodonga (VIC) and Albury (NSW) in 2006 and 2010 respectively to work with young people who need different or alternative settings, to successfully complete their education. In December 2016 the schools were launched under the new name, 'Indie School', which reflects our vibrant, young clientele. Since then, our schools have grown in number and geographic location and at the start of 2025 we anticipate that we will have 35 registered school campuses in all six Australian states.

We believe every young person has the capacity to learn and the right to success through education. We focus on the individual needs of each student to build their skills and knowledge so that they achieve success in their studies. We offer a range of alternative learning options that are designed to engage students, whilst also creating enjoyable learning experiences.

Student wellbeing is important to us and we ensure that we build strong relationships with the students to identify and support them in dealing with their personal issues. We recognise that it is not easy raising an adolescent and that many young people have difficulty coping in their teenage years.

The schools work with parents and guardians to ensure that there is strong support from both the school and home, to enhance the work we are doing. This handbook is provided for parents/guardians and each student, as a guide to the processes, expectations and requirements for enrolment, at either of the schools.

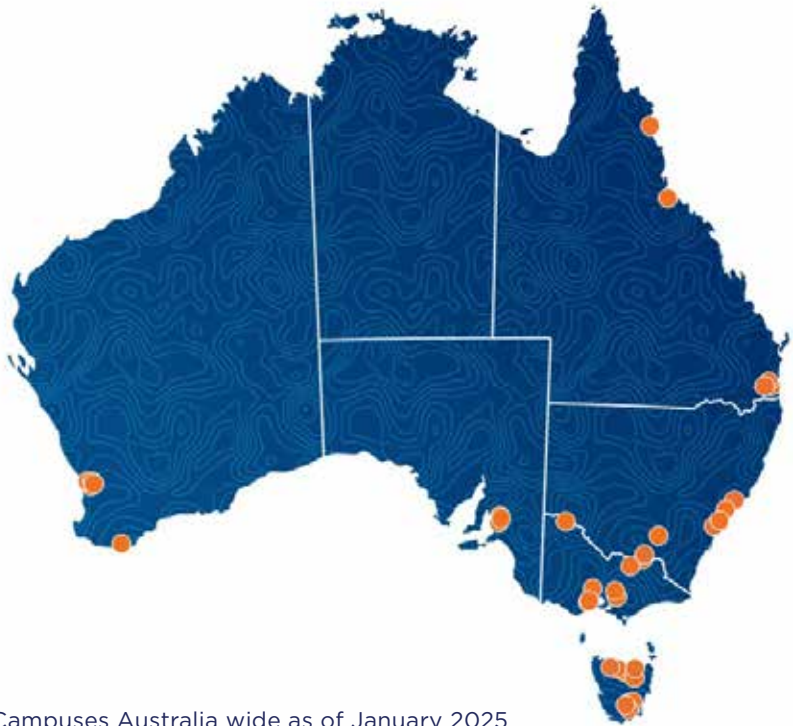
Staff members at all schools are passionate about ensuring each student's education is one that will build life skills, as well as an education that enables a transition to employment or further training. Staff do this by:

- Understanding each student's learning strengths, styles and capacity.
- Engaging with students with respect and at a personable level.
- Using strong differentiated learning strategies.
- Having an in depth understanding of the curriculum and how to modify it to suit the student.
- Providing counselling and specialist support to the student.
- Advising students on potential training and employment opportunities; and
- Helping students to set achievable goals for their future.

This handbook will guide you as you decide whether this is the right place to belong, connect and succeed. We encourage you to speak to our staff and ask the questions you want answered. It will be our privilege to work with you, to achieve the best outcomes possible for each student's future.



Rodney Wangman OAM
Principal



35 Campuses Australia wide as of January 2025



contents

OUR SCHOOLS	1
STUDENT LEARNING	3
CURRICULUM	3
LEARNING PATHWAYS	4
ASSESSING AND REPORTING STUDENT'S PROGRESS	6
STUDENT HEALTH, SAFETY AND WELLBEING	8
SCHOOL INFORMATION FOR PARENTS/GUARDIANS AND STUDENTS	10
CONTACT INFORMATION	21
SCHOOL TERM DATES & W.A PUBLIC HOLIDAYS FOR 2025	22

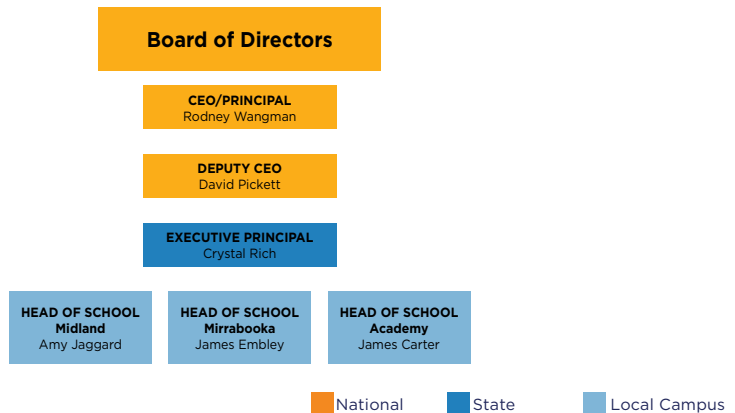


our schools in W.A

Indie School in Midland along with another campus in Mirrabooka are registered as independent non-government schools.

Registered through the Education Standards Board and designated as Special Assistance Schools (SAS), the schools cater for young people in Years 9 – 12 who are unable to complete their studies in mainstream school, for various reasons.

Indie Schools are owned and run by Indie Education, a not-for-profit, charitable institution. Headed up by a CEO and a large executive team responsible to a Board of Directors, the company employs over 700 people nationally.



Our schools are purposefully small and Indie School, Midland established in 2021, has an enrolment of 100 students.

The Mirrabooka Campus was opened in 2023 with around 100 students.

IN ALL OUR SCHOOL SETTINGS, STUDENTS CAN EXPECT:

- Smaller class sizes;
- Hands on activities, school-based projects.
- VET courses
- Wellbeing support services
- Year 9-12 curriculum.
- Positive working relationships with teachers and staff at the school; and
- Strong career advice, support and guidance, including opportunities for School Based Apprenticeships (SBAT) and potential for work placement.

DEMOCRATIC PRINCIPLES:

The school's values are drawn from Indie Education's Vision and Mission. We believe that learning is intrinsically valuable and that it:

- Empowers the individual
- Promotes growth of the individual
- Provides opportunities and choice
- Improves quality of life; and
- Advances citizenship in our communities.

THE SCHOOLS' EDUCATIONAL PHILOSOPHY FOCUSES ON THE:

- Development of the student's personal qualities and attitudes;
- Development of the student's knowledge, skills and understandings; and
- Effective teaching and learning processes and experiences that focus on the engagement and growth of the individual student.

Indie Schools welcome students who have had difficulty engaging in other educational settings. We offer an alternative opportunity for young people to complete their education; this is done in a safe and supportive environment focused on each student's development and wellbeing.

Indie School is committed to the safety and wellbeing of all children and young people and has zero tolerance for child abuse.

student learning

Indie School aims to re-engage each young person in learning through ensuring that each student's strengths are identified and individual knowledge, skills and attitudes form the basis of their growth as learners.

At our schools there is an emphasis on ensuring each student has an opportunity to re-engage with learning. This requires a strong focus on literacy and numeracy, as well as the development of more sophisticated thinking in areas of critical analysis, creative thinking and problem solving. Students are encouraged to become more reflective in the approach they take to their studies and to develop skills that will build an appreciation for lifelong learning.

Students are provided with opportunities to undertake classroom activities, as well as becoming involved with learning activities outside the classroom and within the community. This assists students to learn about the opportunities that exist in the community for further learning and potential employment.

The schools focus is on building student capacity that will enable them to improve and gain success in their studies.

curriculum

INDIE SCHOOL – YRS 9 & 10 AUSTRALIAN CURRICULUM, YR 11 & 12 WESTERN AUSTRALIAN CERTIFICATE OF EDUCATION GENERAL (WACE) OR FOUNDATION PATHWAYS

The Australian curriculum is taught to Year 9 and 10 students across all sites. Year 10 students who demonstrate proficiency in literacy and numeracy may be able to complete a Certificate I in Hospitality or Certificate II in Workplace Skills (subject to availability and timetabling). Yr 11 & 12 Students may complete WACE General or Foundation Pathways.

Indie Schools in Western Australia offer a rolling enrolment for Year 9 to 11 students. Due to the requirements in Year 12, it is recommended that students completing their Year 12 studies commence at the beginning of the year.

However, if needed, we are able to provide Year 13 to those students in Year 12 enrolling mid-year

learning pathways

Students attending our schools often arrive after experiencing barriers in other educational settings. The school has been trialling approaches to improving learning outcomes for students and ensuring that the learning pathways selected are appropriate at a given time.

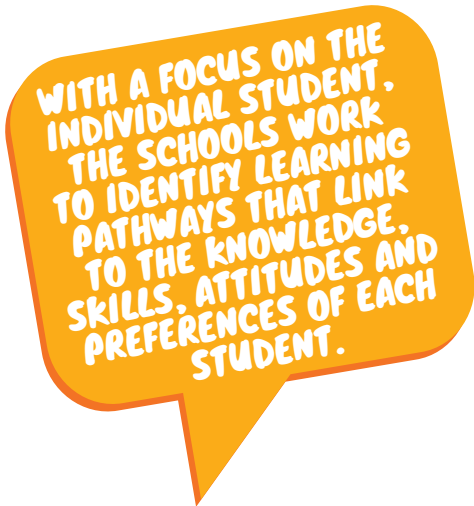
Time is taken to assess and gain an understanding of the learning history of each young person who enrolls at the school. From the detailed assessments undertaken, individual learning and life plans are developed, to set clear targets and potential future career goals for each student. This plan guides any decisions about the learning pathway a student may undertake and the best modality for learning of the individual student. The schools currently provide learning pathways for secondary students that include:

- Western Australian Curriculum Year 9 and 10
- Western Australian Certificate of Education (WACE)
- Vocational Education and Training (VET)
- School Based Apprenticeships and Traineeships

VOCATIONAL EDUCATION AND TRAINING (VET)

Through Indie College (our registered training organisation or RTO) the following VET courses may be offered are Hospitality and Applied Digital Technologies. When completed, these courses provide WACE credits.

VET delivered by other institutions are permitted, however there may be some cost involved payable by the student. The fee may be subsidised if it is part of a school-based apprenticeship. Further information about VET opportunities can be provided by our VET in Schools Coordinator or Head of School.



WESTERN AUSTRALIA CERTIFICATE OF EDUCATION (WACE)

To qualify for a WACE, students must successfully meet a number of requirements relating to breadth and depth, an achievement standard and the literacy and numeracy standard in their senior secondary schooling. These requirements are listed below.

BREATH AND DEPTH

Completion of a minimum of 20 units, or the equivalent. This requirement must include at least:

- Ten Year 12 units, or the equivalent
- Four units from an English learning area course, post-Year 10, including at least one pair of Year 12 units from an English learning area course
- One pair of Year 12 units from each of List A (arts/languages/social sciences) and List B (mathematics/science/ technology).

ACHIEVEMENT STANDARD

- Achievement of at least 14 C grades or higher (or the equivalent) in Year 11 and Year 12 units, with a minimum of six C grades (or the equivalent) in Year 12 units.
- Completion of at least four Year 12 ATAR courses, or at least five Year 12 General courses (or a combination of General and up to three Year 12 ATAR courses) or equivalent, or a Certificate II (or higher) VET qualification in combination with ATAR, General or Foundation courses.

Note: the partial completion of a Certificate III or higher VET qualification may meet this requirement, as outlined in the WACE Manual 2022.

STUDENT PROGRESSION

Students are supported to complete the mandatory requirements of study at Year 10, so that they can progress to further study. If a student has significant learning gaps and does not complete their Year 10 successfully, the student will meet with the WACE and VET Coordinator and/or the Head of School to discuss possible alternatives, in relation to educational options for the following year.

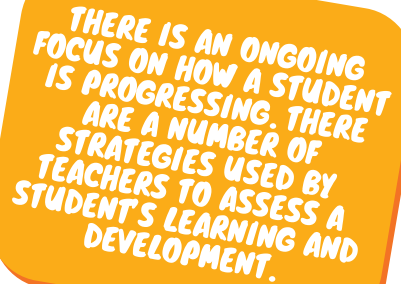
The Western Australian Statement of Student Achievement (WASSA) is issued to all Year 12 students at the completion of their secondary schooling.

assessing & reporting student progress

ASSESSMENT FOR LEARNING

Assessment at Years 9 and 10 is based on Assessment for Learning, this focuses on ensuring that assessment:

- is an essential and integrated part of planning teaching and understanding learning outcomes.
- reflects a belief that all students can improve.
- involves setting learning goals with students.
- helps students know and recognise the standards for which they are aiming.
- involves students in self-assessment and peer assessment.
- provides feedback to help students
- understand the next steps in learning and plan how to achieve them; and
- involves teachers, students and parents/guardians in reflecting on assessment data.



THERE IS AN ONGOING FOCUS ON HOW A STUDENT IS PROGRESSING. THERE ARE A NUMBER OF STRATEGIES USED BY TEACHERS TO ASSESS A STUDENT'S LEARNING AND DEVELOPMENT.

Teachers implement a range of different assessment strategies that assist the student to improve their skills and knowledge and builds their understanding of the link between how they learn and how to achieve their individual learning goals.

Please refer to the Year 9 and 10 Assessment Handbook for details of assessment tasks, due dates and school and student responsibilities, in relation to the Australian Curriculum requirements.

TESTING AND BENCHMARKING

Upon enrolment, an assessment is made of a student's literacy and numeracy levels, through online testing. These tests allow the school to identify the current literacy and numeracy levels of the student.

Plans for improvement are built upon the results of this testing and other information provided on enrolment, including any previous school reports. The literacy and numeracy testing is repeated at regular intervals.

NAPLAN

Year 9 students are encouraged to take part in NAPLAN testing, as this also provides valuable information of a student's literacy and numeracy levels and progress they are making in their learning.

National assessment and reporting is the responsibility of the Australian Curriculum, Assessment and Reporting Authority (ACARA), more information is available from www.nap.edu.au. ACARA is also responsible to all governments for developing the Australian Curriculum and for reporting overall student and school performance.

The authority also manages the My School website, which provides information about all Australian Schools.

OLNA

Students who haven't achieved a certain proficiency level in the Year 9 NAPLAN (National Assessment Program – Literacy and Numeracy) test may be required to sit the OLNA.

OLNA stands for the Online Literacy and Numeracy Assessment, a computer-based assessment for Western Australian Year 10, 11, and 12 students designed to help them meet the minimum literacy and numeracy standards required for the Western Australian Certificate of Education (WACE).



student health, safety and wellbeing

At Indie School there is a supportive and strong Student Welfare component, responsible for assisting students with concerns/issues that they may have.

Being one of the first staff members that you will meet, our Welfare Officer provides enrolment advice, support and referral services and in class health and wellbeing programs.

Student Welfare Officers focus on supporting students' overall wellbeing during their time at Indie Education, creating an environment conducive to individual growth and success.

They collaborate closely with Indie programs (Indie School, Indie College, Indie Academy) to provide consistent support, based on individual circumstances.

Delivering programs and support that enhance the students' social, emotional, and physical wellbeing, fostering resilience and self-confidence is key to students' successful outcomes at Indie School.

As required, the school has in place strategies for dealing with emergencies, serious incidents, inappropriate interactions between students and wellbeing and support services.

While our Welfare Officers are not counsellors, they are available for student support and are able to provide guidance on options for a range of services including:

- student health services;
- building resilience;
- mental health services;
- anti-bullying;
- reducing drug and alcohol abuse;
- child protection services;
- personal development;
- safety; and
- homelessness.

FIRST AID AND ANAPHYLAXIS

Qualified First Aid staff are available to assist a student who requires assistance in dealing with a non-emergency medical situation. In cases of emergency or ill health, the school will immediately contact the parent/guardian to approve any medical treatment or to collect the student from school.

It is important that each student's contact details are up to date at all times.

Anaphylaxis is a severe allergic reaction which requires life-saving medication. For a student with anaphylaxis, parents/guardians must provide a plan and medication to the school in the event that the child needs immediate treatment. It is imperative that an individual management plan is current and staff are able to provide appropriate support and intervention to a child with anaphylaxis.

An in date 'EpiPen' must be provided to the school.



HEALTHY EATING

Students will be provided with lunch each day that they attend through the lunch period. It is not compulsory that they eat the provided meals / snacks. Parents/guardians play an important role in ensuring that their child/ren are provided with a range of healthy food options.

Students can bring their own lunch or snack items to make their own food at school. Facilities including a microwave oven and toasters are available for use. It is expected that students clean up after themselves if they use the school kitchen. Breakfast items are also available.

student information for parents/ guardians and students

ENROLMENT AND SCHOOL FEES

To enroll at Midland campus, you need to contact the Student Welfare and Enrolments Officer through Indie Hotline on 1800 046 343 (Opt. 1, 7, 1 for Midland) or by completing an Expression of Interest form located on the Indie School website <https://indieschool.edu.au/campus/midland/#apply-now> .

An enrolment package will be sent out upon request. An appointment for an interview will then be made with Welfare and Enrolments Officer once the forms in the package are completed. If you are having difficulty with the forms, we can help you with them at the interview.

At the interview you will be required to provide the following documents:

- Birth certificate for enrolling student;
- Copies of most recent school reports;
- Medicare card;
- Enrolment forms and any other paperwork as discussed.

Any questions you have can also be answered during the interview.

The school's process for enrolment includes:

- Interview with the Welfare Officer which will include a welfare discussion and general and specific school information (for example, timetables);
- Information about school rules and student signing of Conduct Sign Off Form;
- Testing for literacy and numeracy skills prior to commencement of formal classes;
- Recording parent/guardians email address etc.

2025 STUDENT FEES

In the interest of making our schools accessible, there are no students' fees payable in 2025. Excursions and some other activities may incur a charge, that is payable by the student.



ATTENDANCE

Students are required to attend all their timetabled classes. Individual learning plans may result in a modification to attendance requirements, and this will be discussed with students and parents, as necessary.

Parents/guardians/students should text 0447 437 878 if a student will be absent from school.

A note or a doctor's certificate is required for any student absence. The school will follow up any unjustified absences. Independent students are required to provide a doctor's certificate for all absences. Please note that prolonged unexplained absences may jeopardise a student's enrolment at the school.

If a student is absent for a prolonged period and the absence is not approved, any family or student receiving government benefits will be at risk of losing their entitlement when the absence is reported to Centrelink. All NSW schools have an obligation to report unexplained absences of more than 30 days out of 100 as educational neglect to the Department.

COMMUNITY PARTNERSHIP

To provide students with opportunities to learn within their local community, the schools have set up or been involved in a number of partnerships and local events to support student learning.

CONTACT INFORMATION

It is very important that parents/guardians ensure that the school has their current details at all times. In the event of an accident or illness, or if the school needs to contact the family/guardian urgently, contact details need to be up to date. If family circumstances change, this information also needs to be provided.

SCHOOL POLICIES

Indie School has established policies that guide the operation of the school and the care of students who attend the school. Parents/guardians are able to request and access the policies which directly affect the students care and management. Such policies include, but are not limited to:

- Enrolment Policy and Procedure;
- Child Protection Policy;
- Child Safe Standards Policy;
- Behaviour Management and Support Policy;
- Discipline Policy;
- Attendance Policy and Procedures;
- First Aid and Anaphylaxis Policies; and
- Student Code of Conduct.

School policies are available on the school's website or through the Welfare Officer or Assistant Head of School. The following briefly outlines some of the important policies that students and parents/guardians should be aware of and understand when a student attends Indie School.

BEHAVIOUR MANAGEMENT AND SUPPORT

Indie School expects good behaviour and will not tolerate offensive language, violent behaviour or disrespect to staff and members of the Indie School and wider Indie community.

Poor behaviour may result in removal from the class environment, being placed on an in-school suspension, not being permitted to attend excursions or other activities, being placed on a short or long suspension, returning to school on an individual plan.

A student may be sent home following a phone call to parent/guardian, or in the case of illegal or violent behavior, the police will be called. A student who displays repeated poor behaviour or dangerous, aggressive behaviour may be expelled after due process. Please refer to our Behaviour Management and Support Policy and Discipline Policy available on our website, for information about the right to appeal suspension and expulsion decisions.

CORPORAL PUNISHMENT

No form of corporal punishment is permitted as a component of discipline or behaviour management at the school. Our duty of care, codes of conduct and child protection regulations strictly prohibit any use of corporal punishment or condoning corporal punishment in any way.

DAMAGES AND BREAKAGES

If a student damages school equipment or facilities, the student is required to pay for any repairs.

EXCURSIONS

School excursions may be undertaken for any subject area. The school attempts to keep any costs to a minimum so that all students may participate.

Where payment is required for students to attend an excursion, ample time will be provided for planning of payments to the school.

At enrolment, a blanket excursion permission form for local excursions can be signed. There will be notification given of planned excursions.

FOOD AND DRINK IN CLASS

No food or drink (other than water) is permitted in any classroom. Energy drinks such as Red Bull, Rock Star, Monster, Full Throttle etc are not permitted at school, due to the health risks linked to the high caffeine content of these drinks.

GOVERNANCE

The Board of Indie Education is the governing body/School Council, for Indie School.

COMPLAINTS

Students and parents/guardians are able to meet with senior school staff in the event that a complaint arises, during the course of their child's attendance at the school. A formal complaint can also be made by completing the Complaint Form, located on the website. You can ask the Welfare Officer for help in completing this form. The policy and procedure will be followed in dealing with the complaint, to reach an acceptable outcome for all parties involved.





HOMEWORK

Students are not given set homework but if a student falls behind or misses work, they must catch up, to the satisfaction of the teacher. Students may complete catch up work at the school at times arranged with their teachers.

IDENTITY CARDS

If a student requires a proof of age identity card they are able to organise to have one printed through the Student Welfare and Enrolments Officer.

IMMUNISATION

Immunisations occur through the school vaccination program. Students and parent/guardians will be notified of scheduled times.

LUNCH PASS

Parents/guardians must give permission for a student to leave the school premises during break time. If a student has parental/carer permission to leave the school premises during school time, this will only be provided at the discretion of the Head of School. Please note that breakfast, lunch and snacks are provided to all students.

MOBILE PHONES/DIGITAL DEVICES/DIGITAL LEARNING

Mobile phones and other personal devices are not allowed to be used while school is in session and they are to be handed in to the teacher at the start school; this is not negotiable.

Parents/guardians are requested to ring the school and not their child, if information needs to be passed on to the student.

The schools provide significant opportunities for students to learn about and manage technology and responsible use of devices. All classes are able to use computers for online research, class work and communication. Class sets of iPads and/or laptops connected to the school WIFI are available for certain projects. Students are provided with a school email address and access to Microsoft 365 for Education (including selected Microsoft Office applications) to assist with learning, store documents and exchange information with teachers and students.

NEWSLETTERS

Each term a school newsletter is provided that reports on term activities, any important news for parents/guardians and students, public holidays and important upcoming school events. Please check your emails and Indie School's Facebook page for important updates: www.facebook.com/indieschool.midland.perth/

PARENT COMMUNICATION

Indie School may contact parents/guardians/students via the school Facebook page, email, SMS, newsletters, student reporting, phone calls or at a face to face meeting.

Please note that email and Facebook are our preferred form of communication as it is immediate and in writing. At enrolment we must obtain at least one parent/guardian email address. Students will receive a school email address and access to Microsoft 365 for Education.

Parents and students, please 'like' @indieschool.edu to ensure you receive all the latest news, via Facebook.

Parents are able to contact the school during business hours through the Indie Hotline on 1800 046 343. Please do not call students on mobiles during school time.

PERSONAL PROPERTY

Students are responsible for taking care of any personal property they bring to school. The school cannot guarantee the safety of any personal property that is left at the school. Valuable items should be left at home.

PHOTOGRAPH/MEDIA CONSENT

At the time of enrolment, parents/guardians are able to approve the use of their child's photo for use by the school, for promotion of school programs.

PRIVACY OF CONFIDENTIAL INFORMATION

All confidential information provided by families to the school is secured and is not allowed to be released, except to those organisations and persons with approval and/or legislative authority to access the information.

REPORTS

Student reports are provided at the end of Terms 2 and 4. These are emailed to parents/independent students during the term vacation. Requests to attend an interview with a teacher of the student can be arranged by contacting the school.

ROLL MARKING

On time attendance at school is very important. The roll is marked daily and a student must have permission to leave early, for an approved appointment. Lateness arrival to school is recorded and monitored and unacceptable. Any late arrivals will result in disciplinary action. Parents/guardians will be notified of student absences, via text message.

SCHOOL ASSEMBLIES

School assemblies or more informal class meetings are held for all students, on a regular basis. These gatherings are used to provide important information to students, as well as to let them know of any upcoming events, fundraisers or external school activities.

SCHOOL TIMES

Due to the flexible timetables that apply to the schools, school times may change from term to term. If this occurs, all students and parents/guardians will receive a copy of the updated school timetable, which indicates the times the student is expected to attend school for classes. Note that the timetable is subject to change.

SMOKING

Indie Education policy states that smoking/vaping is not permitted within 15 meters of the school premises.

STUDENT CODE OF CONDUCT

Any student attending either of the schools is expected to behave in line with the Student Code of Conduct. The Code outlines the expectations around student behaviour. A copy of the Code is available upon enrolment and will be discussed with students at a school assembly and in class on a regular basis.

YOUTH ALLOWANCE

Students who have turned 16 and are studying at either of the schools, may become eligible for Youth Allowance. This allowance is based on a number of criteria including age. Other things that are taken into account are whether the student is:

- dependent or independent;
- studying full time; and
- in receipt of other income; and
- if you are an Australian resident.

Students will need to make an application to Centrelink to find out if they are eligible for the Youth Allowance.





If you wish to speak to a staff member, please call the Indie Hotline.

Phone: 1800 046 343 (Opt. 1, 7, 1 for Midland)

Email: enquiries@indieschool.edu.au

Indie School Midland is staffed Monday to Friday between 8.30am and 4:30pm and is closed during school holidays periods. Messages can be left on the phone answering service and will be acted on at the earliest convenience.

Amy Jaggard Head of School Midland

Mobile: 0460 929 449 **Email:** amy.jaggard@indie.edu.au

Justine Thompson Student Welfare and Enrolments Officer

Mobile: 0473 471 267 **Email:** justine.thompson@indie.edu.au

Crystal Rich Executive Principal **Email:** crystal.rich@indie.edu.au

David Pickett Deputy CEO **Email:** david.pickett@indie.edu.au

school term dates 2025

- TERM 1:** 5 February to 11 April (Student Dates)
Wed 5 Feb: Students commence Term 1
- TERM 2:** 28 April to 4 July (Student Dates)
Mon 28 Apr: Staff development day
Tue 29 Apr: Student commence Term 2
- TERM 3:** 21 July to 26 September (Student Dates)
Mon 21 Jul: Staff development day
Tue 22 Jul: Student commence Term 3
- TERM 4:** 13 October to 18 December (Student Dates)
Mon 13 Oct: Staff development day
Tue 14 Oct: Student commence Term 4

Inclusive of the above, the National and Western Australia Public Holidays are:

HOLIDAY	DATE	DAY
New Year's Day	1 January 2025	Wednesday
Australia Day	27 January 2025	Monday
Labour Day	3 March 2025	Monday
Good Friday	19 April 2025	Friday
Easter Saturday	20 April 2025	Saturday
Easter Sunday	21 April 2025	Sunday
Easter Monday	21 April 2025	Monday
Anzac Day	25 April 2025	Friday
WA Day	2 June 2025	Monday
King's Birthday	29 September 2025	Monday
Christmas Day	25 December 2025	Thursday
Boxing Day	26 December 2025	Friday



1800 046 343 | 60 Yelverton Drive (PO Box 3572), Midland WA 6056

www.indieschool.edu.au

